

Application

End Stop Switch SA14 is used for control of DC-actuators and DC-motors in e.g. lifting devices, agricultural machinery and hospital beds.

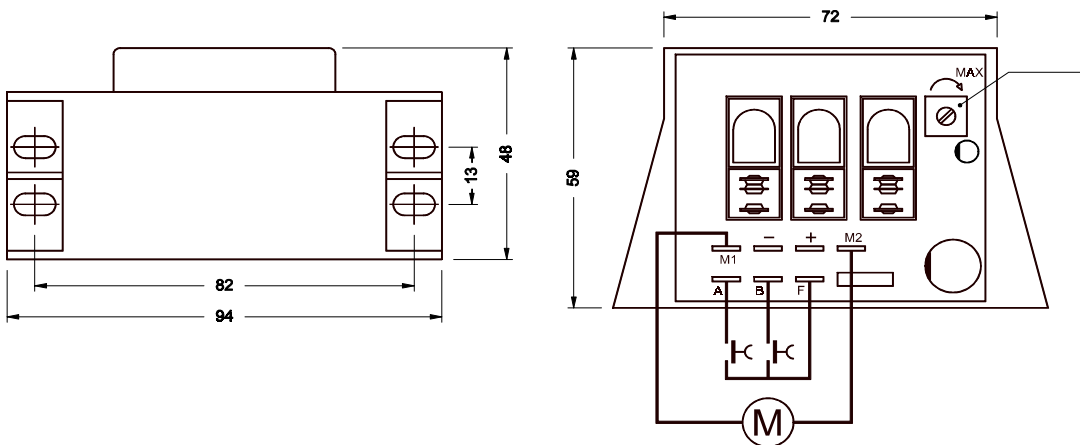
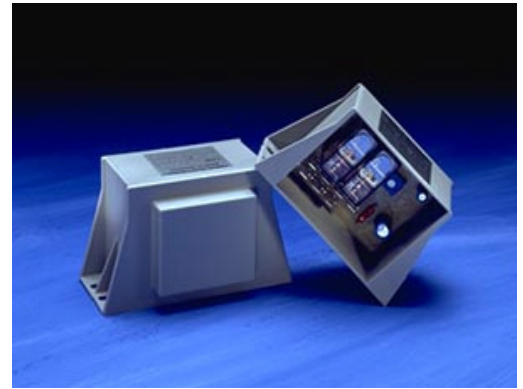
Description

The End Stop Switch will stop the motor or the actuator automatically when it encounters a stop or load exceeding the value preset on the potentiometer.

Function

When the contact FORWARD or RETURN is closed, the motor will run and when the contact is released, the motor will stop. If the motor is blocked or encounters a stop, the current in the motor will increase and the End Stop Switch disconnects the motor. The current-value is adjusted on the trim potentiometer.

- Especially suitable for battery operation. Can also be supplied from a transformer with bridge circuit (full ripple).
- Can reverse motor poles.
- Adjustable current-stop.
- No power use in rest situation.
- Plugs can be delivered.



Technical data

Type No.	Supply voltage	Voltage tolerance	Adjustable (max. ratings)	Control current
SA14, 24V, 7A	24V DC	+20/-10%	0,7 - 7 A	60 mA
SA14, 24V, 14A	24V DC	+20/-10%	1,4 - 14 A	60 mA



Tel +31(0)182 30 34 56
 Fax +31(0)182 38 69 20
 E-mail info@elmeq.nl
 Internet www.elmeq.nl

Replaces A14E 01 Date 13-mar-03 Replaces ref.: --
 Availability and right to change reserved

Member of the ERIKS Group

Tel: +31 (0)182 30 34 56 eriks-mechatronics.info