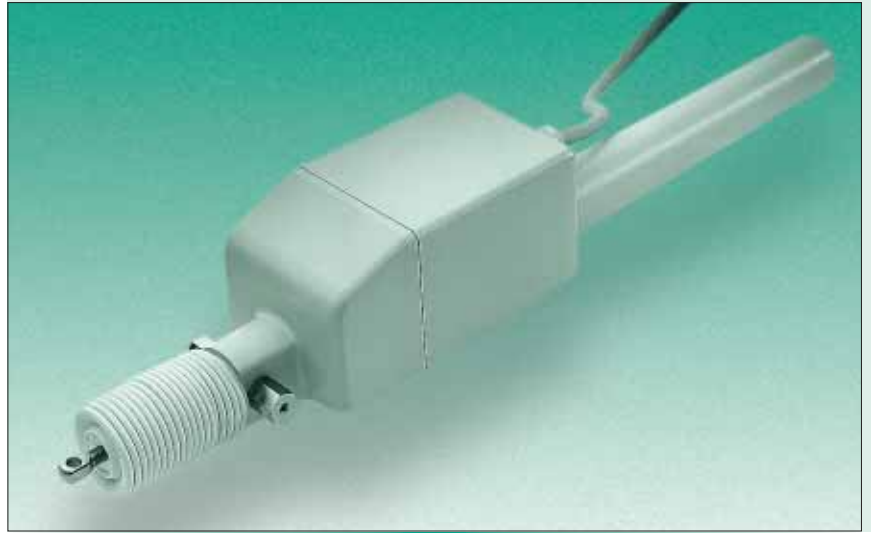


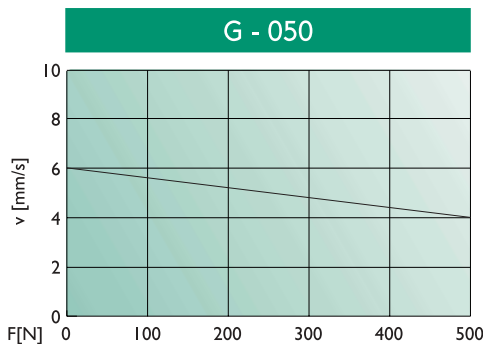
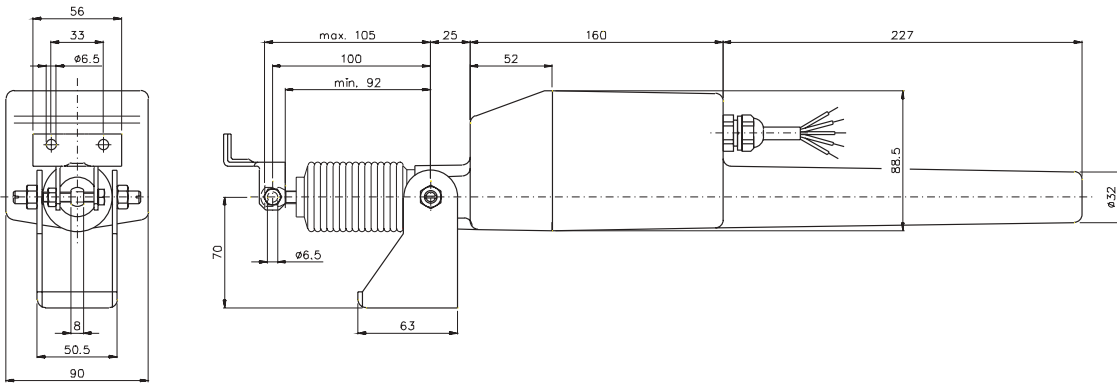
Specifications

- Voltage 230 VAC/ 50 HZ
- Compressive force max. 500 Newton
- Tensile force max. 150 Newton
- Elegant plastic housing
- Wire length ca. 1 meter
- Integrated end stop
- Connecting rod can not rotate
- Provided with bellow to protect the connecting rod up to stroke 300 mm
- Provided with mounting brackets
- Suitable for applications such as opening windows, dome lights etc.
- 100 % self-locking
- Protection level IP54
- Retracted end position feedback
- Standard stroke 300 mm



Options

- Voltage 24VDC
- Stroke up to 1000 mm
- Force up to 900 N compressive / tensile
- Different mounting devices



Model	Compressive Force [N]	Tensile Force [N]	speed* [mm/s]	Current [mA]	Duty Cycle [%]	
G-050-300-230 VAC	500	150	6	205	10	▲

