

5.

HIWIN LAM Series (2)

LAM3



Screw type	ACME
Weight*	2.8 kg
Protection	IP 54
Compatible controller	LAK2D/LAK2B LAK4/LAK6B
Working temp	+5°C ~40°C

* Stroke length 200 mm

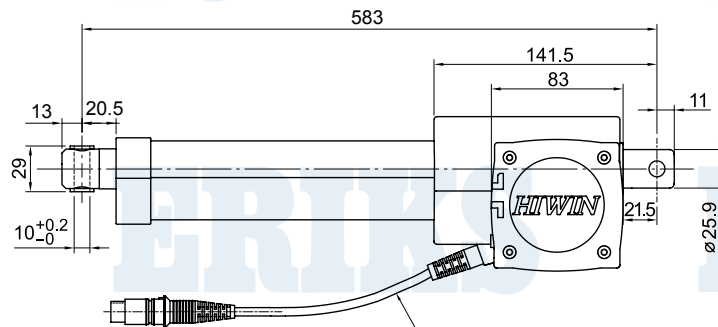
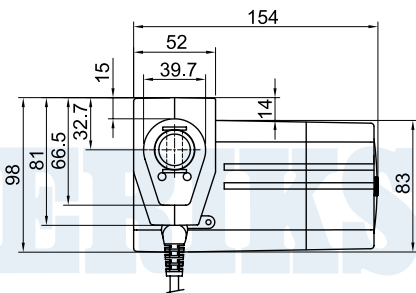
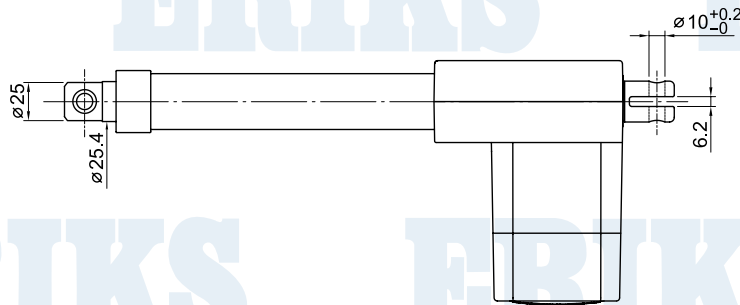
* Option: (1)IP 66

(2)Safety Nut (RL=S+183)

(3)Back fixture turned 90°

• RL=S+171

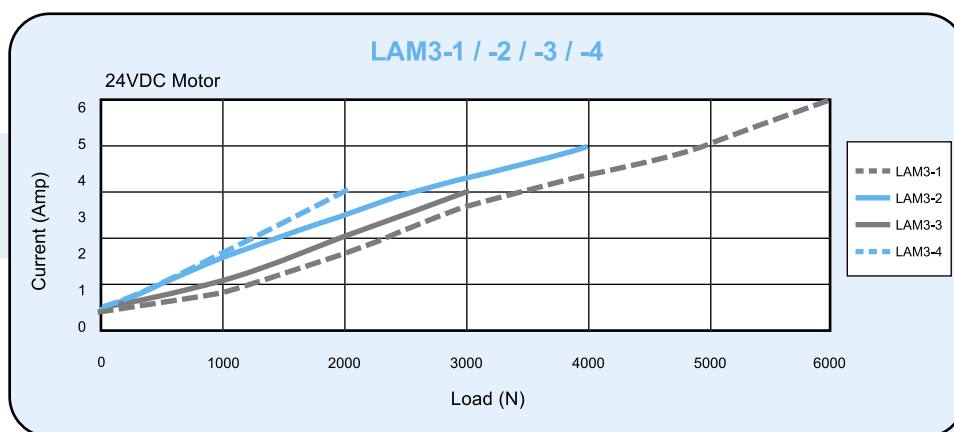
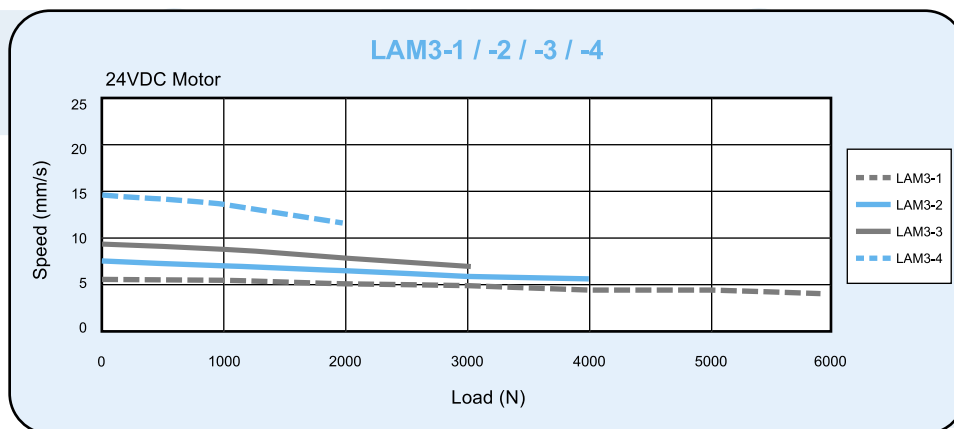
RL:Retracted length
S:Stroke length



MOTOR CABLE
LENGTH=200mm
DIAMETER=ø5.5

● LAM3 Specifications

Model	Thrust max. (N)	Pulling max. (N)	Holding max. (N)	force (mm/s) Load=Max./Load=0	Standard stroke (mm) : S								Duty cycle %	Max.current (A)
					100	150	200	250	300	350	400	24VDC		
LAM3-1	6000	5000	5000	4 / 5.5	100	150	200	250	300	350	400	10	6	
LAM3-2	4000	4000	4000	5.5 / 7.5	100	150	200	250	300	350	400	10	5	
LAM3-3	3000	3000	3000	7 / 9	100	150	200	250	300	350	400	10	4	
LAM3-4	2000	2000	1500	11.5 / 14.5	100	150	200	250	300	350	400	10	4	



Note: The test results are obtained by using 24VDC power supply.

● Ordering Information

