



# NTB SERIES



## PRODUCT LIST

LEAD SCREWS

ACTUATORS/SLIDES

LINEAR RAILS

SPLINE SHAFTS



## NTB Series

The Kerk NTB Series anti-backlash assembly is designed for higher load applications than the ZBX or KHD series units. Using Kerk's patented take up mechanism, it maintains axial stiffness throughout its life while system torque is held to a minimum. The need to highly pre-load the nut to compensate for load has been eliminated with the Kerk NTB Series assembly. The nut is manufactured with a self lubricating polyacetal designed to run efficiently on Kerk's precision rolled shafting. Screws are 303 stainless and are available with Kerk's proprietary long - life TFE coating. Simple, compact design can be easily modified for custom applications. The NTB assembly provides low drag torque, high system stiffness, smooth operation, and long life throughout its load and speed range.

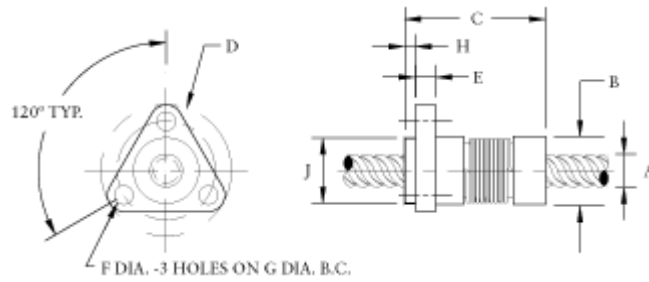
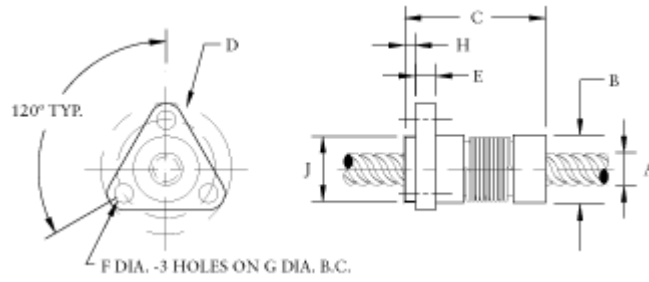
### NTBF SERIES - FLANGE MOUNT

Series	Screw Ø	Nut Ø	Nut Length	Flange Ø	Flange Thickness	Mount Hole Ø	Bolt Circle Ø	Hub Width	Hub Ø	Dynamic Load	Drag Torque
	A	B	C	D	E	F	G	H	J	lbs. (kg)	oz.-in. (NM)
TRIANGULAR FLANGE	in. (mm)	in. (mm)	in. (mm)	in. (mm)	in. (mm)	in. (mm)	in. (mm)	in. (mm)	in. (mm)		
NTBF4000	1/4 (6.35)	.52 (13.2)	1.1 (28)	1.00 (25.4)	.16 (4.0)	.143 (3.63)	.750 (19.1)	.08 (2.0)	.500 (12.7)	10 (4.5)	1-3 (.01-.02)
NTBF6000	3/8 (9.53)	.80 (20.3)	1.8 (45)	1.50 (38.1)	.20 (5.1)	.200 (5.08)	1.125 (28.6)	.10 (2.6)	.750 (19.1)	20 (9.1)	1-3 (.01-.02)
NTBF7000	7/16 (11.11)	.90 (22.9)	1.8 (46)	1.62 (41.2)	.23 (5.7)	.200 (5.08)	1.250 (31.8)	.10 (2.6)	.875 (22.2)	30 (13.6)	1-3 (.01-.02)
ROUND FLANGE											
NTBF8000	1/2 (12.70)	1.06 (26.9)	2.1 (54)	1.75 (44.5)	.25 (6.4)	.220 (5.59)	1.406 (35.71)	.12 (3.0)	1.00 (25.4)	100 (45.5)	2-6 (.015-.04)
NTBF10000	5/8 (15.88)	1.38 (34.9)	2.3 (59)	2.13 (54.1)	.28 (7.0)	.220 (5.59)	1.750 (44.45)	.10 (2.5)	1.25 (5.1)	125 (56.8)	2-6 (.015-.04)
NTBF12000	3/4 (19.05)	1.56 (39.6)	2.7 (67)	2.38 (60.5)	.31 (7.9)	.220 (5.59)	2.000 (50.80)	.10 (2.5)	1.50 (38.1)	150 (68.2)	3-7 (.02-.05)
NTBF14000	7/8 (22.23)	1.75 (44.5)	2.8 (70)	2.63 (66.8)	.38 (9.5)	.220 (5.59)	2.250 (57.15)	.12 (3.0)	1.75 (44.5)	200 (90.9)	4-8 (.03-.06)
NTBF15000	15/16 (23.81)	1.75 (44.5)	2.8 (70)	2.63 (66.8)	.38 (9.5)	.220 (5.59)	2.250 (57.15)	.12 (3.0)	1.75 (44.5)	200 (90.9)	4-8 (.03-.06)



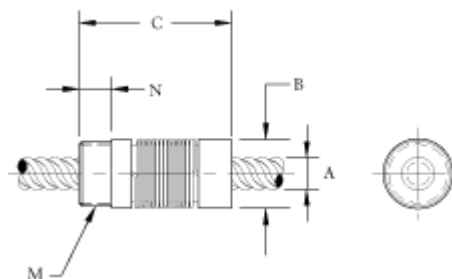
**ELMEQ**  
Member of the ERIKS Group

Tel: +31 (0)182 30 34 56 eriks-mechatronics.info



### NTBY SERIES - THREAD MOUNT

Series	Screw Ø	Nut Ø	Nut Length	Thread	Thread Length	Dynamic Load	Drag Torque
<b>THREAD MOUNT</b>							
<b>1/4" - 7/16"</b>							
	A in. (mm)	B in. (mm)	C in. (mm)	M* in. (mm)	N in. (mm)	lbc. (kg)	oz.-in. (N·M)
NTBY4000	1/4 (6.35)	.52 (13.2)	1.1 (28)	7/16-20	.25 (6.4)	10 (4.5)	1-3 (.01-.02)
NTBY6000	3/8 (9.53)	.80 (20.3)	1.8 (45)	3/4-20	.38 (9.5)	20 (9.1)	1-3 (.01-.02)
NTBY7000	7/16 (11.11)	.90 (22.9)	1.8 (46)	13/16-16	.38 (9.5)	30 (13.6)	1-3 (.01-.02)
<b>1/2" - 15/16"</b>							
NTBY8000	1/2 (12.70)	1.06 (26.9)	2.1 (54)	15/16-16	.38 (9.5)	100 (45.5)	2-6 (.015-.04)
NTBY10000	5/8 (15.88)	1.38 (34.9)	2.3 (59)	1 1/8-16	.38 (9.5)	125 (56.8)	2-6 (.015-.04)
NTBY12000	3/4 (19.05)	1.56 (39.6)	2.7 (67)	1 3/8-16	.50 (12.7)	150 (68.2)	3-7 (.02-.05)
NTBY14000	7/8 (22.23)	1.75 (44.5)	2.8 (70)	1 9/16-16	.50 (12.7)	200 (90.9)	4-8 (.03-.06)
NTBY15000	15/16 (23.81)	1.75 (44.5)	2.8 (70)	1 9/16-16	.50 (12.7)	200 (90.9)	4-8 (.03-.06)



**ELMEQ**  
Member of the ERIKS Group

Tel: +31 (0)182 30 34 56 eriks-mechatronics.info