



PRODUCT LIST

- LEAD SCREWS ACTUATORS/SLIDES LINEAR RAILS SPLINE SHAFTS



NTG Series

The patented NTG Series offers a cost effective anti-backlash assembly for applications requiring precise positional accuracy, repeatability, and smoothness. The NTG has been developed specifically for demanding applications that require zero backlash with minimal drag torque. With its compact size and no moving components, the NTG can also be easily incorporated into customer specified, custom molded parts.

An integral part of the NTG design is the ability to manually adjust the drag torque setting to match specific requirements of the application. This drag torque can also be set at the factory to meet individual customer specifications.

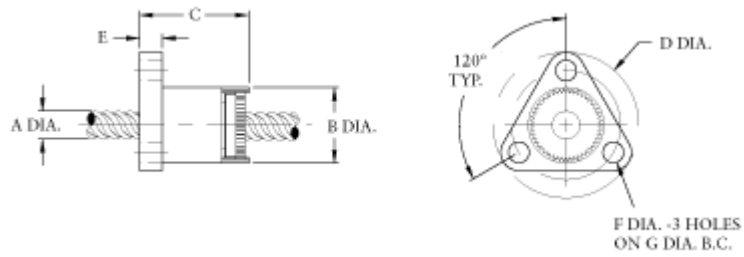
The standard NTG unit utilizes a self-lubricating polyacetal nut on a precision rolled 303 stainless steel screw. The NTG series is available in Mini, 1/4", and 3/8" sizes. End machining to customer specifications and TFE screw coating are optional.

NTGF SERIES - FLANGE MOUNT									
Series	Screw Ø	Nut Ø	Nut Length	Flange Ø	Flange Thickness	Mounting Hole Ø	Bot Circle Ø	Dynamic Load	Drag Torque
	A in. (mm)	B in. (mm)	C in. (mm)	D in. (mm)	E in. (mm)	F in. (mm)	G in. (mm)	lbs. (kg)	oz.-in. (N·M)
NTGF4000	1/4 (6.35)	.52 (13.2)	.8 (19)	1.00 (25.4)	.16 (4.0)	.143 (3.63)	.750 (19.1)	10 (4.5)	1-3 (.01-.02)
NTGF6000	3/8 (9.53)	.80 (20.3)	1.0 (26)	1.50 (38.1)	.20 (5.1)	.197 (5.00)	1.125 (28.6)	20 (9.1)	1-3 (.01-.02)



ELMEQ
Member of the ERIKS Group

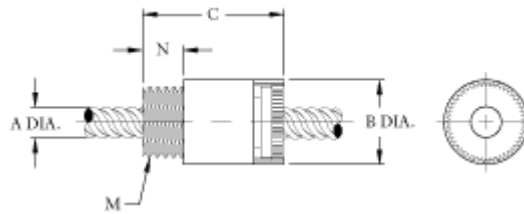
Tel: +31 (0)182 30 34 56 eriks-mechatronics.info



NTGY SERIES - FLANGE MOUNT

Series	Screw Ø	Nut Ø	Nut Length	Thread	Thread Length	Dynamic Load	Drag Torque
	A in. (mm)	B in. (mm)	C in. (mm)	M* in. (mm)	N in. (mm)	lbs. (kg)	oz.-in. (NM)
NTGY4000	1/4 (6.35)	.520 (13.2)	.9 (22)	7/16 - 20	.250 (6.35)	10 (4.5)	1-3 (.01-.02)
NTGY6000	3/8 (9.53)	.800 (20.3)	1.2 (30)	3/4 - 20	.375 (9.53)	20 (9.1)	1-3 (.01-.02)

*metric available as required



ELMEQ
Member of the ERIKS Group

Tel: +31 (0)182 30 34 56 eriks-mechatronics.info