



PRODUCT LIST

LEAD SCREWS

ACTUATORS/SLIDES

LINEAR RAILS

SPLINE SHAFTS

ZBX Series



The patented Kerk ZBX Series anti-backlash assembly offers an effective linear actuator for design operations requiring precise positional accuracy and repeatability, with minimum cost.

The standard ZBX unit utilizes a patented self-lubricating polyacetal nut radially preloaded on a 303 stainless steel screw.

The ZBX assembly, through its unique transfer of loads, offers exceptional torque consistency and repeatability when traversing in either direction. The inherent damping qualities of the ZBX design make it ideally suited for vertical applications requiring noise or vibration control.

End machining to customer specifications and TFE screw coating are optional, as are designs for special operating configurations or environments.

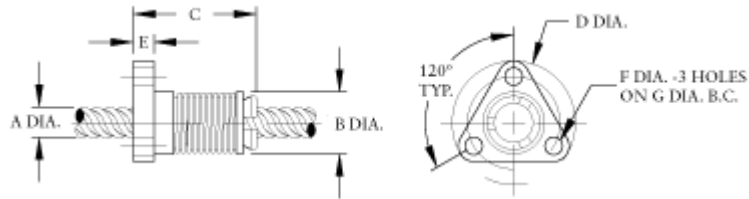
ZBXF SERIES - FLANGE MOUNT

Series	Screw Ø	Nut Ø	Nut Length	Flange Ø	Flange Thickness	Mounting Hole Ø	Bolt Circle Ø	Dynamic Load	Drag Torque
	A in. (mm)	B in. (mm)	C in. (mm)	D in. (mm)	E in. (mm)	F in. (mm)	G in. (mm)	lbs. (kg)	oz.-in. (NM)
ZBXF4000	1/4 (6.35)	.50 (12.7)	1.0 (26)	1.0 (25.4)	.18 (4.6)	.140 (3.6)	.750 (19.1)	5 (2.3)	5-2 (.004-.01)
ZBXF6000	3/8 (9.52)	.70 (17.8)	1.9 (48)	1.5 (38.1)	.18 (4.6)	.200 (5.1)	1.125 (28.6)	10 (5)	1-3 (.01-.02)
ZBXF7000	7/16 (11.11)	.80 (20.3)	1.9 (48)	1.5 (38.1)	.18 (4.6)	.200 (5.1)	1.125 (28.6)	15 (7)	2-5 (.015-.03)
ZBXF8000	1/2 (12.70)	.89 (22.6)	2.0 (51)	1.62 (41.2)	.26 (6.6)	.200 (5.1)	1.250 (31.8)	25 (11)	2-5 (.015-.03)
ZBXF10000	5/8 (15.88)	1.06 (26.92)	2.0 (51)	1.75 (44.5)	.26 (6.6)	.200 (5.1)	1.375 (34.9)	35 (16)	3-7 (.02-.05)



ELMEQ
Member of the ERIKS Group

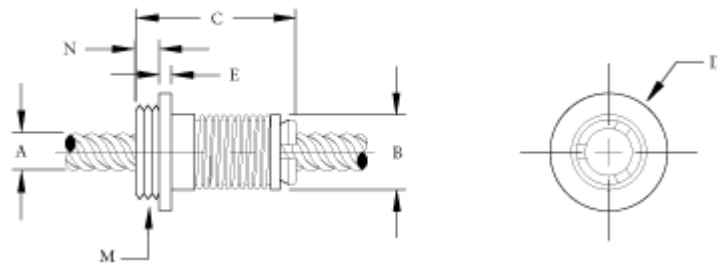
Tel: +31 (0)182 30 34 56 eriks-mechatronics.info



ZBXY SERIES - THREAD MOUNT

Series	Screw Ø	Nut Ø	Nut Length	Flange Ø	Flange Thickness	Thread	Thread Length	Dynamic Load	Drag Torque
	A in. (mm)	B in. (mm)	C in. (mm)	D in. (mm)	E in. (mm)	M* in. (mm)	N in. (mm)	lbs. (kg)	oz.-in. (NM)
ZBXY4000	1/4 (6.35)	.50 (12.7)	1.3 (33)	.80 (20.3)	.22 (5.6)	5/8 - 18	.16 (4.1)	5 (2.3)	.5-2 (.004-.01)
ZBXY6000	3/8 (9.52)	.70 (17.8)	2.2 (56)	1.00 (25.4)	.17 (4.3)	5/8 - 18	.38 (9.7)	10 (5)	1-3 (.01-.03)
ZBXY7000	7/16 (11.11)	.80 (20.3)	2.3 (59)	1.00 (25.4)	.12 (3.1)	15/16 - 16	.38 (9.7)	15 (7)	2-5 (.015-.03)
ZBXY8000	1/2 (12.70)	.89 (22.6)	2.3 (59)	1.02 (25.9)	.12 (3.1)	15/16 - 16	.38 (9.7)	25 (11)	2-5 (.015-.03)
ZBXY10000	5/8 (15.88)	1.06 (26.9)	2.4 (61)	1.06 (26.9)	.15 (3.8)	15/16 - 16	.50 (12.7)	35 (16)	5-7 (.02-.05)

*metric available as required



ELMEQ
Member of the ERIKS Group

Tel: +31 (0)182 30 34 56 eriks-mechatronics.info